

LANUSA




COMPANY PROFILE

PT. LOGAM NUSANTARA PERKASA

Ease Your Needs

TENTANG KAMI



LANUSA

PT. Logam Nusantara Perkasa

PT. Logam Nusantara Perkasa (LANUSA) didirikan pada tahun 1988 dan bergerak di bidang perdagangan Pipa Besi dan Fitting serta Valve sebagai importir, distributor, dan stockist barang untuk berbagai industri seperti minyak dan gas, perkapalan, makanan, sawit, pertambangan dan industri lainnya di Indonesia.

Seiring dengan perkembangan perusahaan dan permintaan dari customer maka lingkup pengadaan barang LANUSA meluas meliputi segmen Stainless steel dan Besi Baja Konstruksi.

LANUSA dalam perkembangannya memperluas pasar pemasaran tidak hanya di pulau Jawa tapi juga sampai ke pulau Sumatra, Kalimantan dan Sulawesi.

Produk produk kami semua kebanyakan produk impor dari negara negara dengan kualitas tinggi seperti Jepang, Eropa, Amerika, China dan Taiwan.

Dengan pengalaman lebih dari 30 tahun LANUSA selalu mengedepankan kepuasan customer dalam menjalankan visi dan misinya.

Visi

Menjadi perusahaan skala nasional dengan kepuasan pelanggan menjadi tujuan utama

Misi

Meningkatkan kualitas mutu, harga, dan jasa penyediaan produk sehingga memudahkan kerja pelanggan

PRODUK KAMI

VALVE

PIPA

FLANGE

FITTING

**BAJA
KONSTRUKSI**

PT. Logam Nusantara Perkasa

Jl. Pangeran Jayakarta Komplek 121 no. 71
Mangga Dua Selatan, Kec. Sawah Besar, Jakarta Pusat

 (021) 6296226, 6259948, 6259980

Fax (021) 6297448, 6297448

 +62 8158267777

 sales@lanusa.co.id, lanusa.sni@gmail.com

 www.lanusa.co.id

VALVE

Ball Valve



Check Valve



Y-Type Strainer





Globe Valve



Butterfly Valve



Gate Valve





Seamless

Ukuran	Pressure Type	Material			
		Carbon Steel	Galvanized	Stainless Steel (SS304/304L)	Stainless Steel (SS316/316L)
1/4"	SCH10	✓	✓	✓	✓
1/2"					
3/4"	SCH20	✓	✓	✓	✓
1"					
1 1/2"	SCH40	✓	✓	✓	✓
2"					
2 1/2"	SCH80	✓	✓	✓	✓
3"					
3 1/2"	SCH160	✓	✓	✓	✓
4"					
up to 24"					



Welded

Ukuran	Pressure Type	Material			
		Carbon Steel	Galvanized	Stainless Steel (SS304/304L)	Stainless Steel (SS316/316L)
1/4"	Medium	✓	✓		
1/2"					
3/4"	SCH10	✓	✓	✓	✓
1"					
1 1/2"	SCH20	✓	✓	✓	✓
2"					
2 1/2"	SCH40	✓	✓	✓	✓
3"					
3 1/2"	SCH80	✓	✓	✓	✓
4"					
up to 24"					



FLANGE

CARBON STEEL

STAINLESS STEEL

- *American Standard
- *British Standard
- *Japanese Standard
- *Germany Standard



JIS 10K



SO/RF



WN/RF



Blind



SW/RF



JIS 10K



SO/RF



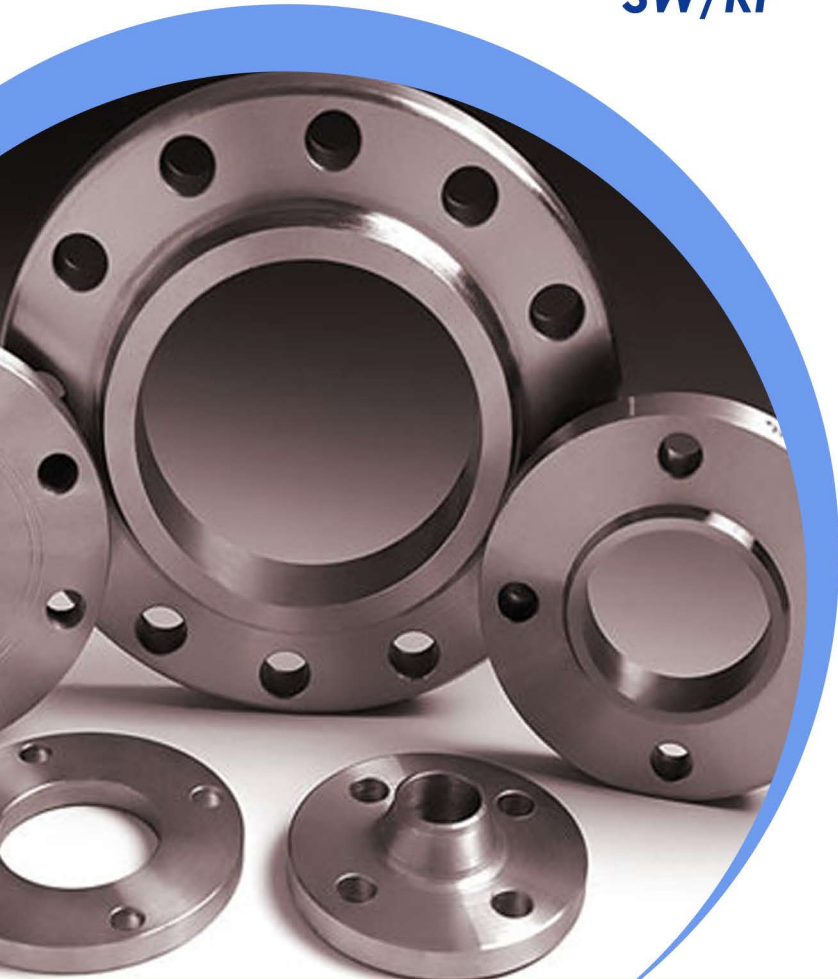
Blind



WN/RF



SW/RF



FLANGE STANDARD

*JAPANESE STANDARD

STANDARD

JIS B2220	Slip On Plate
Pressure: 5K - 30K	Slip On Hubbed
Size: DN10 - DN1500	Socket Welding
	Welding Neck
	Lap Joint
	Threaded
	Integral
	Blank

*GERMAN STANDARD

STANDARD

DIN
Pressure: PN6 - PN400
Size: DN10 - DN400

TYPE

DIN 2527 - Blind; PN6 - PN 100
DIN 2566 - Screwed; PN10 and PN16
DIN 2573 - Flanges for soldering or welding; PN6
DIN 2576 - Flanges for soldering or welding; PN10
DIN 2627 - Welding neck; PN400
DIN 2628 - Welding neck; PN250
DIN 2629 - Welding neck; PN320
DIN 2630 - Welding neck; PN1 and PN2.5
DIN 2631 - Welding neck; PN6
Din 2632 - Welding neck; PN10
DIN 2633 - Welding neck; PN16
DIN 2634 - Welding neck; PN25
DIN 2635 - Welding neck; PN40
DIN 2636 - Welding neck; PN64
DIN 2637 - Welding neck; PN100
DIN 2638 - Welding neck; PN160
DIN 2641 - Lapped flanges; PN6
DIN 2642 - Lapped flanges; PN10
DIN 2655 - Lapped flanges; Plain collars; PN25
DIN 2656 - Lapped flanges; Plain collars; PN40

*AMERICAN STANDARD

STANDARD

ASME B16.5
Pressure: Class 150 - 2500
Size: 1/2" - 24"
ASME B16.47A
Pressure: Class 150 - 900
Size: 26" - 60"
ASME B16.47B
Pressure: Class 75 - 900
Size: 26" - 60"

TYPE

Blind
Boss Blind
Lap Joint
Plate
Slip On
Threaded
Welding Neck
Long Welding Neck

*BRITISH STANDARD

STANDARD

BS4504
Pressure: PN2.5 - PN40
Size: DN10 - DN4000
BS10
Table: T/A, T/D, T/E, T/F, T/H
Size: 1/2" - 48"

TYPE

Plate
Loose Plate
Welding Neck
Blank
Hubbed Threaded
Hubbed Slip On
Integral
Plate
Boss
Welding Neck



CARBON STEEL

FITTING



45D Elbow



180D Elbow



Stub End



Tee



Cross



Con Reducer



Cap



Ecc Reducer



90D Elbow

*AMERICAN STANDARD

STANDARD

ASME B16.9
Wall Thickness: S5S - XXS

TYPE

Elbow 90D
Elbow 45D
Concentric Reducer
Eccentric Reducer
Cap
Equal Tee
Reducing Tee

*JAPANESE STANDARD

STANDARD

JIS B2311
Wall Thickness: SGP - LG

TYPE

Elbow 90D
Elbow 45D
Concentric Reducer
Eccentric Reducer
Cap
Equal Tee
Reducing Tee

STAINLESS STEEL

*AMERICAN STANDARD

STANDARD

ASME B16.9
Wall Thickness:
SCH10 - XXS

TYPE

Elbow 90D
Elbow 45D
Concentric Reducer
Eccentric Reducer
Cap
Equal Tee
Reducing Tee



Tee



Cap



90D Elbow



45D Elbow



Cross



180D Elbow



Stub End

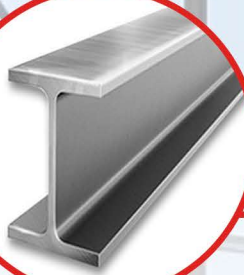


Ecc Reducer



Con Reducer

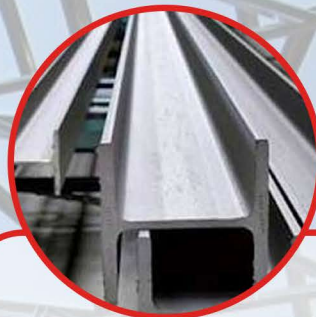
BAJA KONSTRUKSI



WF (Wide Flange)

Ukuran	Berat
--------	-------

100 x 50 x 5 x 7 mm - 12 M	122.00
125 x 60 x 6 x 8 mm - 12 M	158.00
150 x 75 x 5 x 7 mm - 12 M	168.00
200 x 100 x 5,5 x 8 mm - 12 M	256.00
250 x 125 x 5 x 9 mm - 12 M	355.00
300 x 150 x 5,5 x 9 mm - 12 M	440.00
350 x 175 x 7 x 11 mm - 12 M	595.00
400 x 200 x 8 x 13 mm - 12 M	792.00
500 x 300 x 10 x 16 mm - 12 M	1075.00
600 x 200 x 11 x 17 mm - 12 M	1272.00
700 x 300 x 13 x 24 mm - 12 M	2250.00
800 x 300 x 124 x 26 mm - 12 M	2520.00



H-Beam

Ukuran	Berat
--------	-------

100 x 100 x 6 x 8 mm - 12 M	206.00
125 x 125 x 6,5 x 9 mm - 12 M	286.00
150 x 150 x 7 x 10 mm - 12 M	378.00
175 x 175 x 7 x 11 mm - 12 M	482.00
200 x 200 x 8 x 12 mm - 12 M	599.00
250 x 250 x 9 x 14 mm - 12 M	869.00
300 x 300 x 10 x 15 mm - 12 M	1128.00
350 x 350 x 12 x 16 mm - 12 M	1644.00
400 x 400 x 13 21 mm - 12 M	2064.00

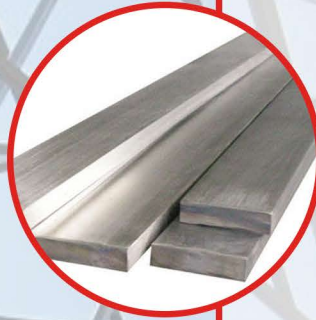


MATERIAL:

- CARBON STEEL
- STAINLESS STEEL SS304/304L, SS316/316L
- GALVANIZED



Hollow



Plat Strip

Ukuran (mm)

Panjang

3 x 19	6 M
3 x 25	6 M
3 x 30	6 M
3 x 38	6 M
4 x 30	6 M
4 x 25	6 M
4 x 38	6 M
4 x 40	6 M
4 x 50	6 M
5 x 19	6 M
5 x 25	6 M
5 x 30	6 M
5 x 32	6 M
5 x 38	6 M
5 x 50	6 M
6 x 30	6 M
6 x 32	6 M
6 x 38	6 M
6 x 50	6 M
6 x 65	6 M
6 x 70	6 M
6 x 100	6 M
8 x 25	6 M
8 x 38	6 M
8 x 50	6 M
8 x 65	6 M
8 x 75	6 M
8 x 100	6 M
9 x 30	6 M
9 x 38	6 M
9 x 50	6 M
9 x 65	6 M
9 x 75	6 M
9 x 100	6 M
10 x 100	6 M
12 x 30	6 M
12 x 50	6 M
12 x 100	6 M
16 x 100	6 M

Ukuran (mm) Panjang Material

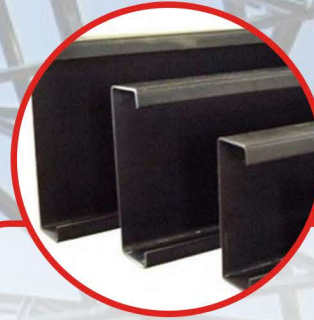
20 x 20 x 1,5	6 M	Carbon
20 x 40 x 1,5	6 M	Steel
30 x 60 x 1,5	6 M	
40 x 40 x 2	6 M	
40 x 40 x 2,3	6 M	
40 x 60 x 2	6 M	Stainless
40 x 80 x 2,3	6 M	Steel
50 x 50 x 2	6 M	
50 x 50 x 2,3	6 M	
50 x 50 x 2,5	6 M	
50 x 50 x 2,7	6 M	Galvanize
50 x 50 x 3	6 M	
60 x 60 x 2	6 M	
60 x 60 x 2,3	6 M	
60 x 60 x 2,5	6 M	
60 x 60 x 3	6 M	
75 x 70 x 3	6 M	
100 x 50 x 3	6 M	
100 x 100 x 3	6 M	
100 x 100 x 4,5	6 M	
150 x 150 x 4,5	6 M	

UNP



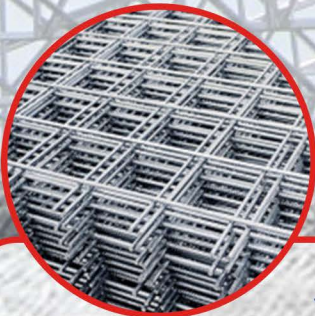
Tipe	Ukuran
UNP 5,0	50 x 38 x 5,0 mm - 6 M
UNP 6,5	65 x 42 x 5,0 mm - 6 M
UNP 7,5	75 x 40 x 5,0 mm - 6 M
UNP 8,0	80 x 45 x 5,0 mm - 6 M
UNP 10,0	100 x 50 x 5,0 mm - 6 M
UNP 12,0	120 x 55 x 7,0 mm - 6 M
UNP 15,0	150 x 75 x 6,5 mm - 6 M
UNP 18,0	180 x 75 x 8,0 mm - 6 M
UNP 20,0	200 x 80 x 8,5 mm - 6 M
UNP 25,0	250 x 90 x 9,0 mm - 6 M
UNP 30,0	300 x 100 x 10 mm - 6 M

CNP



Ukuran	Berat
60 x 30 x 10 x 1,6 mm - 6 M	9.76
75 x 35 x 15 x 1,6 mm - 6 M	12.40
75 x 45 x 15 1,6 mm - 6 M	13.92
75 x 45 x 15 2,3 mm - 6 M	19.50
100 x 50 x 20 1,6 mm - 6 M	17.50
100 x 50 x 20 x 2,3 mm - 6 M	24.40
100 x 50 x 20 x 3,2 mm - 6 M	33.00
125 x 50 x 20 x 2,3 mm - 6 M	27.10
125 x 50 x 20 x 3,2 mm - 6 M	36.80
150 x 50 x 20 x 2,3 mm - 6 M	29.80
150 x 50 x 20 x 3,2 mm - 6 M	40.60
150 x 65 x 20 2,3 mm - 6 M	33.00
150 x 65 x 20 x 3,2 mm - 6 M	45.10
200 75 20 x 3,2 mm - 6 M	55.62

Wire Mesh



Wire Mesh Permeter

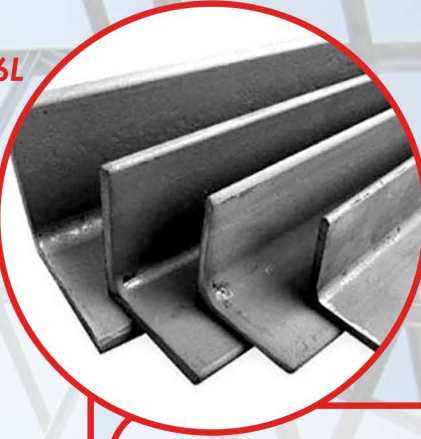
Tipe SNI	Non SNI	Ukuran (meter)
M5	M6 (5.2mm)	2,1 x 5,4
M4	M5 (4.5mm)	2,1 x 5,4
M7	M6 (5.6mm)	2,1 x 5,4
M6	M6 (5.5mm)	2,1 x 5,4
M9	M8 (7.2mm)	2,1 x 5,4
M8	M7 (6.5mm)	2,1 x 5,4
M12	M8 (7.6mm)	2,1 x 5,4
M10	M8 (7.5mm)	2,1 x 5,4
	M12 (11.5mm)	2,1 x 5,4

Wire Mesh Per-Roll

Tipe SNI	Non SNI	Ukuran (meter)
M5	M6 (5.2mm)	2,1 x 54
M4	M5 (4.5 mm)	2,1 x 54
M7 roll	M6 (5.6mm)	2,1 x 54
M6	M6 (5.5mm)	2,1 x 54
	M7 (6.5mm)	2,1 x 54

MATERIAL:

- CARBON STEEL
- STAINLESS STEEL SS304/304L, SS316/316L
- GALVANIZED



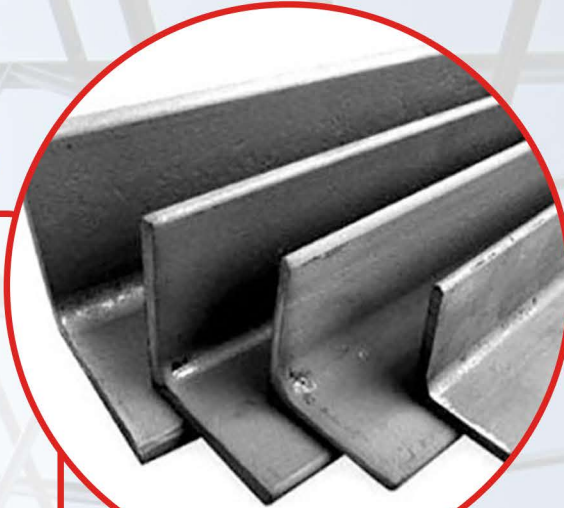
EQUAL ANGLE BAR
(Siku Sama Sisi)

Ukuran	Berat (Kg)
20 x 20 x 3 mm - 6 M	5.31
25 x 25 x 3 mm - 6 M	6.72
25 x 25 x 5 mm - 6 M	10.60
30 x 30 x 3 mm - 6 M	8.16
40 x 40 x 3 mm - 6 M	11.00
40 x 40 x 4 mm - 6 M	14.50
40 x 40 x 5 mm - 6 M	18.00
45 x 45 x 4 mm - 6 M	16.44
45 x 45 x 5 mm - 6 M	20.50
50 x 50 x 4 mm - 6 M	18.40
50 x 50 x 5 mm - 6 M	22.68
50 x 50 x 6 mm - 6 M	27.58
60 x 60 x 5 mm - 6 M	27.30
60 x 60 x 6 mm - 6 M	32.50
65 x 65 x 6 mm - 6 M	35.50
70 x 70 x 6 mm - 6 M	38.28
70 x 70 x 7 mm - 6 M	44.30
75 x 75 x 6 mm - 6 M	41.10
75 x 75 x 7 mm - 6 M	45.00
75 x 75 x 8 mm - 6 M	54.00
75 x 75 x 9 mm - 6 M	59.80
80 x 80 x 8 mm - 6 M	57.30
90 x 90 x 7 mm - 6 M	57.54
90 x 90 x 9 mm - 6 M	73.20
90 x 90 x 10 mm - 6 M	79.80

Ukuran	Berat (Kg)
100 x 100 x 7 mm - 6 M	64.25
100 x 100 x 10 mm - 6 M	90.60
120 x 120 x 8 mm - 6 M	88.20
120 x 120 x 12 mm - 6 M	130.00
125 x 125 x 12 mm - 6 M	140.00
130 x 130 x 9 mm - 6 M	107.10
130 x 130 x 12 mm - 6 M	140.10
150 x 150 x 12 mm - 6 M	164.00
150 x 150 x 15 mm - 6 M	202.00
200 x 200 x 15 mm - 6 M	272.00
200 x 200 x 20 mm - 6 M	358.00
200 x 200 x 25 mm - 6 M	442.00
250 x 250 x 25 mm - 6 M	562.00



UNEQUAL ANGLE BAR (Siku Tidak Sama Sisi)



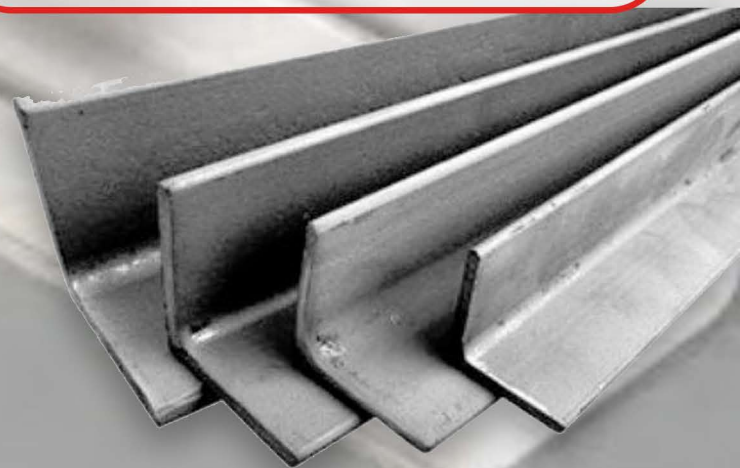
Ukuran Berat (Kg)

40 x 25 x 4 mm - 6 M	11,46
50 x 40 x 5 mm - 6 M	36
50 x 40 x 6 mm - 6 M	23,94
60 x 30 x 5 mm - 6 M	36
60 x 30 x 6 mm - 6 M	23,94
65 x 50 x 5 mm - 6 M	24,96
65 x 50 x 6 mm - 6 M	24,96
65 x 50 x 8 mm - 6 M	40,5
75 x 50 x 6 mm - 6 M	33,9
75 x 50 x 8 mm - 6 M	44,34
75 x 50 x 10 mm - 6 M	52,68
80 x 60 x 6 mm - 6 M	38,22
80 x 60 x 8 mm - 6 M	50,04
100 x 65 x 7 mm - 6 M	52,62
100 x 65 x 8 mm - 6 M	59,64
100 x 65 x 10 mm - 6 M	73,8
100 x 75 x 8 mm - 6 M	63,6
100 x 75 x 10 mm - 6 M	78
100 x 75 x 12 mm - 6 M	92,4
125 x 75 x 8 mm - 6 M	73,2
125 x 75 x 10 mm - 6 M	90

Ukuran

Berat (Kg)

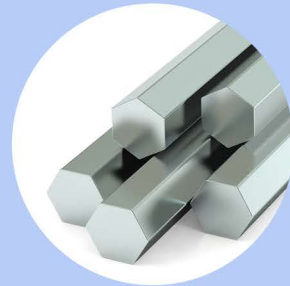
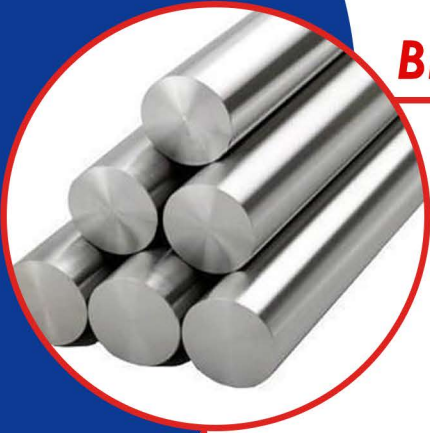
125 x 75 x 12 mm - 6 M	106,8
150 x 75 x 10 mm - 6 M	102
150 x 75 x 12 mm - 6 M	121,2
150 x 75 x 15 mm - 6 M	148,8
150 x 90 x 10 mm - 6 M	109,2
150 x 90 x 12 mm - 6 M	129,6
150 x 90 x 15 mm - 6 M	159,6
200 x 100 x 10 mm - 6 M	138
200 x 100 x 12 mm - 6 M	163,8
200 x 100 x 15 mm - 6 M	202,2
200 x 150 x 12 mm - 6 M	192
200 x 150 x 15 mm - 6 M	237,6



MATERIAL:

- CARBON STEEL
- STAINLESS STEEL SS304/304L, SS316/316L
- GALVANIZED

BESI AS

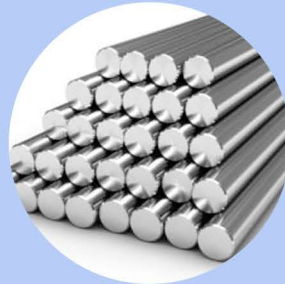


Besi AS Kotak

Besi AS Segi Enam



ST41



S45C

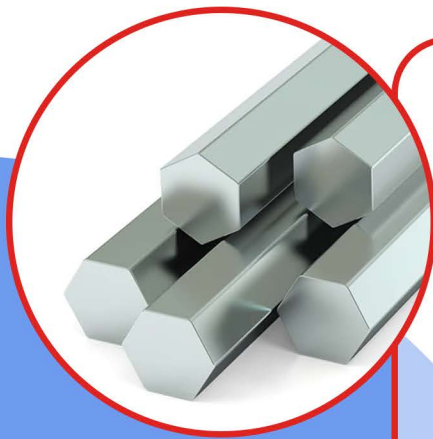
Besi AS Kotak



Ukuran

Panjang (meter)

8 x 8 mm	6 M
10 x 10 mm	6 M
12 x 12 mm	6 M
16 x 16 mm	6 M
19 x 19 mm	6 M
25 x 25 mm	6 M
32 x 32 mm	6 M
38 x 38 mm	6 M
40 x 40 mm	6 M
45 x 45 mm	6 M
50 x 50 mm	6 M



Besi AS Segi Enam

Diameter	Panjang (meter)	Berat (Kg)
6 mm	6 M	1.44
1/4" (6,35 mm)	6 M	1.5
8 mm	6 M	3
3/8" (10 mm)	6 M	4.2
10 mm	6 M	5.4
12 mm	6 M	6.6
1/2" (12,7 mm)	6 M	6.9
5/8" (15,8 mm)	6 M	10.2
3/4" (19,05 mm)	6 M	14.4
7/8" (22,23 mm)	6 M	20
1" (25,4 mm)	6 M	25.9
1 1/8" (28 mm)	6 M	33
1 1/4" (31,75 mm)	6 M	40.4
1 3/8" (35 mm)	6 M	49.2
1 1/2" (38,1 mm)	6 M	60
1 5/8" (41 mm)	6 M	69.6
1 3/4" (44,45 mm)	6 M	79.8
2" (50 mm)	6 M	103.8

Diameter	Panjang (meter)	Berat (Kg)
16 mm	6 M	9.5
18 mm	6 M	12
19 mm	6 M	13.5
20 mm	6 M	15
22 mm	6 M	18.5
25 mm	6 M	24
28 mm	6 M	30
30 mm	6 M	33.5
32 mm	6 M	38
35 mm	6 M	46
38 mm	6 M	54.5
40 mm	6 M	58.5
45 mm	6 M	76
50 mm	6 M	93.5
55 mm	6 M	113
60 mm	6 M	135
65 mm	6 M	160
70 mm	6 M	185
75 mm	6 M	211
80 mm	6 M	240
85 mm	6 M	270
90 mm	6 M	305
95 mm	6 M	340
100 mm	6 M	378



Besi Assental S45C

Besi Assental ST41



Diameter	Panjang (meter)	Berat (Kg)
5 mm	6 M	0.95
6 mm	6 M	1.35
7 mm	6 M	1.85
8 mm	6 M	2.4
9 mm	6 M	3
10 mm	6 M	3.7
11 mm	6 M	4.5
12 mm	6 M	5.35
13 mm	6 M	6.3
14 mm	6 M	7.3
15 mm	6 M	8.35
16 mm	6 M	9.6
17 mm	6 M	10.8
18 mm	6 M	12
20 mm	6 M	15
22 mm	6 M	18
25 mm	6 M	23.5
30 mm	6 M	33.5
35 mm	6 M	45.6
38 mm	6 M	54
40 mm	6 M	59.5
3/8" (9,5 mm)	6 M	3.4
1/2" (12,7 mm)	6 M	6
5/8" (15,8 mm)	6 M	9.5
3/4" (19,05 mm)	6 M	13.5
7/8" (22,23 mm)	6 M	18.38
1" (25,4 mm)	6 M	24
1 1/3" (28,58 mm)	6 M	30.38
1 1/4" (31,75 mm)	6 M	37.5
1 1/2" (38,1 mm)	6 M	54
1 3/4" (44,45 mm)	6 M	73.5
2" (50,8 mm)	6 M	96
2 1/4" (57,15 mm)	6 M	121.5
2 1/2" (63,5 mm)	6 M	150
3" (76,2 mm)	6 M	216

BESI BETON

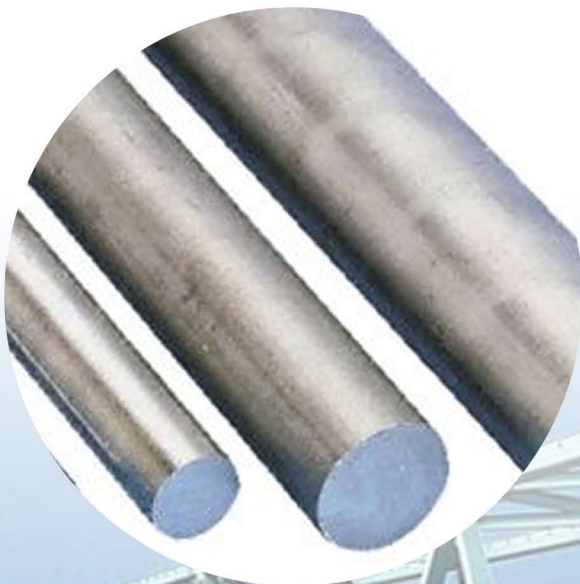
Besi Beton Ulir

Ukuran	Berat (Kg)
10 mm - 12 M	7.40
13 mm - 12 M	12.50
16 mm - 12 M	18.94
19 mm - 12 M	26.71
22 mm - 12 M	35.81
25 mm - 12 M	46.24
28 mm - 12 M	58.00
32 mm - 12 M	76.76
36 mm - 12 M	95.88



Besi Beton Polos

Ukuran	Berat (Kg)
6 mm - 12 M	2.66
8 mm - 12 M	4.74
10 mm - 12 M	7.40
12 mm - 12 M	10.65
13 mm - 12 M	12.50
16 mm - 12 M	18.94
19 mm - 12 M	26.71
22 mm - 12 M	35.81
25 mm - 12 M	46.24
28 mm - 12 M	58.00
32 mm - 12 M	75.76
36 mm - 12 M	95.88



PLAT

Plat Kapal 6' x 20'

Ukuran	Berat (Kg)
4,5 mm x 6' x 20'	394
5 mm x 6' x 20'	438
6 mm x 6' x 20'	525
7 mm x 6' x 20'	613
8 mm x 6' x 20'	700
9 mm x 6' x 20'	788
10 mm x 6' x 20'	875
12 mm x 6' x 20'	1050
13 mm x 6' x 20'	1138
14 mm x 6' x 20'	1225
15 mm x 6' x 20'	1313
16 mm x 6' x 20'	1400
19 mm x 6' x 20'	1663
20 mm x 6' x 20'	1750
22 mm x 6' x 20'	1925
25 mm x 6' x 20'	2188
30 mm x 6' x 20'	2626
40 mm x 6' x 20'	3500
50 mm x 6' x 20'	4375
60 mm x 6' x 20'	5250
65 mm x 6' x 20'	5688
70 mm x 6' x 20'	6125
75 mm x 6' x 20'	6563
100 mm x 6' x 20'	8750

***Tersedia juga:
Plat Kapal Stainless Steel
SS304/304L, SS316/316L**

Plat Kapal 5' x 20'

Ukuran	
4,5 mm x 5' x 20'	328
5 mm x 5' x 20'	365
6 mm x 5' x 20'	438
7 mm x 5' x 20'	510
8 mm x 5' x 20'	583
9 mm x 5' x 20'	656
10 mm x 5' x 20'	729
12 mm x 5' x 20'	875
13 mm x 5' x 20'	948
14 mm x 5' x 20'	1021
15 mm x 5' x 20'	1094
16 mm x 5' x 20'	1167
19 mm x 5' x 20'	1386
20 mm x 5' x 20'	1458
22 mm x 5' x 20'	1604
25 mm x 5' x 20'	1823
30 mm x 5' x 20'	2187
40 mm x 5' x 20'	2916
50 mm x 5' x 20'	3645
60 mm x 5' x 20'	4374
65 mm x 5' x 20'	4739
70 mm x 5' x 20'	5103
75 mm x 5' x 20'	5467
100 mm x 5' x 20'	7290

Plat Hitam 4' x 8'

*Tersedia juga:

- Plat Hitam Galvanized
- Stainless Steel SS304/304L, SS316/316L, SS201

Ukuran	Berat (Kg)
--------	------------

2,3 mm x 4' x 8'	59
3,0 mm x 4' x 8'	75
3,2 mm x 4' x 8'	80
4,5 mm x 4' x 8'	110
6,0 mm x 4' x 8'	145
8,0 mm x 4' x 8'	195
9,0 mm x 4' x 8'	215

Plat Bordes

*Tersedia juga:

- Plat Bordes Carbon Steel
- Plat Bordes Galvanized
- STAINLESS STEEL SS304/304L, SS316/316L
- Aluminium

Ukuran	Berat (Kg)
1,2 mm x 4' x 8'	28.0
1,5 mm x 4' x 8'	35.0
2 mm x 4' x 8'	46.7
2,3 mm x 4' x 8'	54.0
2,6 mm x 4' x 8'	60.7
2,8 mm x 4' x 8'	65.3
2,9 mm x 4' x 8'	67.6
3 mm x 4' x 8'	70.0
3,2 mm x 4 x 8'	74.7
4 mm x 4' x 8'	93.3
4,5 mm x 4' x 8'	105.0
5 mm x 4' x 8'	117.0
6 mm x 4' x 8'	140.0
8 mm x 4' x 8'	187.0
9 mm x 4' x 8'	210.0
10 mm x 4' x 8'	233.0
12 mm x 4' x 8'	280.0
13 mm x 4' x 8'	303.0
15 mm x 4' x 8'	350.0
16 mm x 4' x 8'	373.0
18 mm x 4' x 8'	420.0
19 mm x 4' x 8'	443.0
20 mm x 4' x 8'	466.0
21 mm x 4' x 8'	490.0
22 mm x 4' x 8'	513.0
25 mm x 4' x 8'	583.0
28 mm x 4' x 8'	653.0
30 mm x 4' x 8'	700.0
32 mm x 4' x 8'	747.0
38 mm x 4' x 8'	887.0
50 mm x 4' x 8'	1167.0
65 mm x 4' x 8'	1516.0
75 mm x 4' x 8'	1750.0
100 mm x 4' x 8'	2333.0

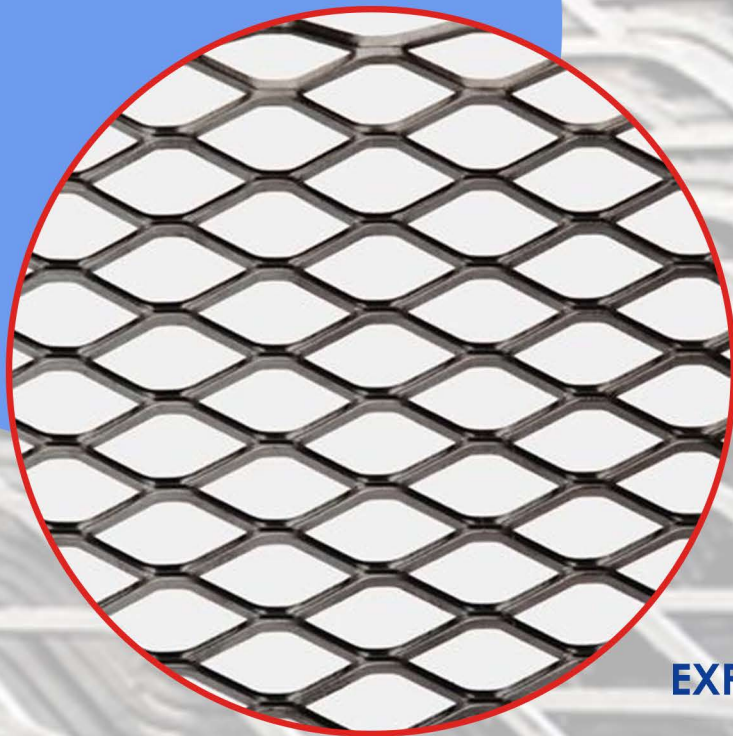
Plat Putih

Ukuran	Berat (Kg)
0,35 mm x 3' x 6'	4.6
0,4 mm x 3' x 6'	5.3
0,5 mm x 3' x 6'	6.6
0,6 mm x 3' x 6'	7.9
0,65 mm x 3' x 6'	8.5
0,7 mm x 3' x 6'	9.2
0,8 mm x 3' x 6'	10.5
0,9 mm x 3' x 6'	11.8
1 mm x 3' x 6'	13.1
1,2 mm x 3' x 6'	15.8
1,5 mm x 3' x 6'	19.7
2 mm x 3' x 6'	26.3
0,35 mm x 4' x 8'	8.2
0,4 mm x 4' x 8'	9.3
0,6 mm x 4' x 8'	14.0
0,7 mm x 4' x 8'	16.3
0,8 mm x 4' x 8'	18.7
0,9 mm x 4' x 8'	21.0
1 mm x 4' x 8'	23.3
1,2 mm x 4' x 8'	28.0
1,5 mm x 4' x 8'	35.0
1,6 mm x 4' x 8'	37.3
1,9 mm x 4' x 8'	45.0
2 mm x 4' x 8'	46.7

Plat Lubang

Type

- D. 3,0 x 1,0 mm x 4' x 8'
- D. 3,0 x 1,2 mm x 4' x 8'
- D. 3,0 x 1,5 mm x 4' x 8'
- D. 3,0 x 2,0 mm x 4' x 8'
- D. 3,0 x 3,0 mm x 4' x 8'
- D. 5,0 x 1,5 mm x 4' x 8'
- D. 5,0 x 2,0 mm x 4' x 8'
- D. 5,0 x 3,0 mm x 4' x 8'
- D. 8,0 x 1,0 mm x 4' x 8'
- D. 8,0 x 1,2 mm x 4' x 8'
- D. 8,0 x 1,5 mm x 4' x 8'
- D. 8,0 x 2,0 mm x 4' x 8'
- D. 8,0 x 3,0 mm x 4' x 8'
- D. 10,0 x 1,0 mm x 4' x 8'
- D. 10,0 x 1,2 mm x 4' x 8'
- D. 10,0 x 1,5 mm x 4' x 8'
- D. 10,0 x 2,0 mm x 4' x 8'
- D. 10,0 x 3,0 mm x 4' x 8'
- D. 12 x 1,0 mm x 4' x 8'
- D. 12 x 1,2 mm x 4' x 8'
- D. 12 x 1,5 mm x 4' x 8'
- D. 12 x 2,0 mm x 4' x 8'
- D. 12 x 3,0 mm x 4' x 8'



EXPANDED METAL

Tipe	Ukuran (mm)	Ketebalan (mm)
C 1015	1200 x 2400	1.0
D 1020	1200 x 2400	1.0
D 1620	1200 x 2400	1.6
F 1628	1200 x 2400	1.6
F 2028	1200 x 2400	2.0
F 3035	1200 x 2400	3.0
G 3045	1200 x 2400	3.0
G 2030	1200 x 2400	2.0
GM 30080	1200 x 2400	3.0
GM 50105	1200 x 2400	5.0
GR 50110	1200 x 2400	5.0
GR 50080	1200 x 2400	5.0

PVC



Pipa



Fitting



Flange



Valve

BRAND PRODUK

LNV
VALVE

JOTA
VALVE

HENXIN

KITZ

 **SPS**


SPINDO


Bakrie Pipe
Industries

GRP



KRAKATAU STEEL

I.S.T.W.

TOYO

 **HISAKA**

RUCIKA
Dimana air mengalir sampai jauh

CM

LANUSA

Ease Your Needs

KONTAK KAMI



| PT. Logam Nusantara Perkasa

Jl. Pangeran Jayakarta Komplek 121 no. 71
Mangga Dua Selatan, Kec. Sawah Besar, Jakarta Pusat

 (021) 6296226, 6259948, 6259980

Fax (021) 6297448, 6297448

 +62 8158267777

 sales@lanusa.co.id, lanusa.sni@gmail.com

 www.lanusa.co.id